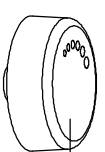


MODERNA-EQONA  
DIMMER 1000 VA KULLANIM KILAVUZU / USER'S MANUAL FOR DIMMER 1000 VA

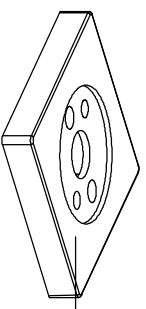
Düğme / Button



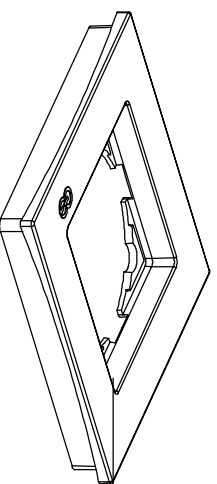
Vida / Screw



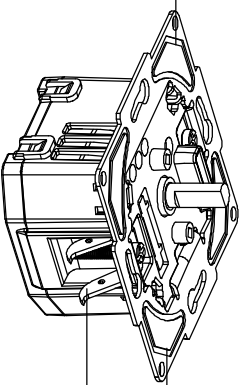
Kapak / Cover



Çerçeve / Frame

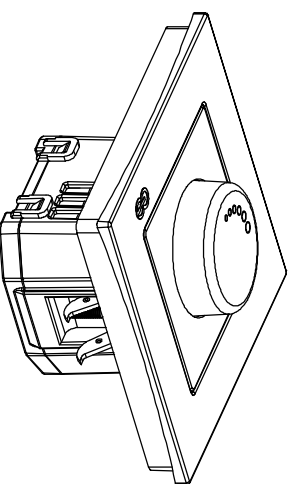


Şase / Chassis

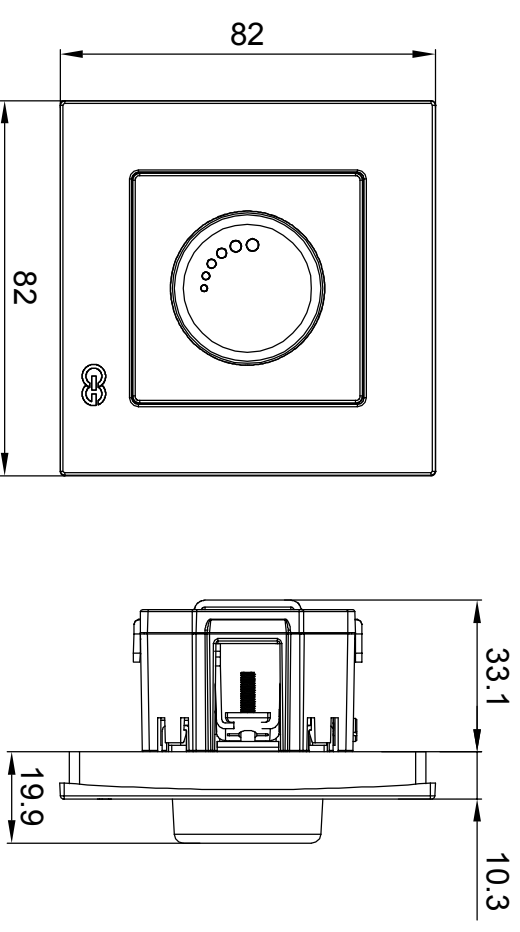


Modül / Module

Tırnak / Claw



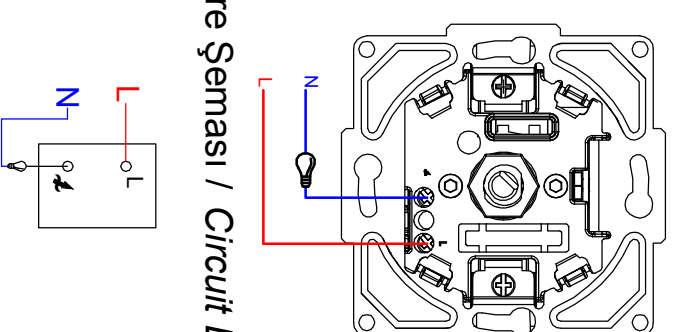
Bağlantı Şeması / Wiring Diagram



Bağlantı Şeması / Wiring Diagram

230V ~ 50-60 Hz	min.	max.
Akkor Lamba Write-Hot Lamp	60 VA	1000 VA
Manyetik Trafolu Halojen Lamba Halogen Lamp with Magnetic Transformer	100 VA	600 VA

Devre Şeması / Circuit Diagram



Ürün Montajı / Product Assembly

- Kablo bağlantıları bağlantı şemasına göre yapılır.  
*Cable connections are made according to the wiring diagram.*
- Modül montaj yapılacak kasa içerisine yerleştirilip ve tırnak vidaları ile sıkıştırılarak sabitlenir.  
*The module is inserted into the enclosure and fixed by tightening with claw screws.*
- Kapak çerçeveye takılır.  
*The cover is assembled to frame.*
- Çerçeve şasenin üzerine konumlandırılır ve vidalar yardımıyla sabitlenir.  
*The frame is placed on the chassis and fixed by screwing.*
- Düğme modül üzerinde ki pime yerleştirilerek montaj tamamlanır.  
*The assembly is completed by placing the rotary button to the pin on the module.*